

ASC Steel Deck Add-in for Revit®

2020-2023

Installation and User Guide



August 2022

Revision: 0

# Contents

- Introduction ..... 3
- Installation ..... 4
- Usage..... 8
- Support ..... 10

# Introduction

ASC Steel Deck would like to introduce you to ASC Steel Deck Add-In for Revit.

The Revit add-in for ASC Steel Deck was designed to improve the deck details and specification process, streamline the workflow of specifying your deck profile families and finishes in Revit. The new tool will allow you to specify your deck profile, select the relevant gauge and finishes, then apply the profile to an existing floor/roof type or create a new floor/roof with the desired deck profile. The deck family profiles can also be viewed in your section cuts, which simplifies the generation of roof and floor details.

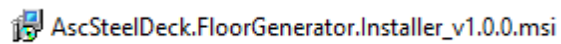
Your inputs selecting the profile and finishes, automatically loads relevant detail drawings and deck attachment styles as a drafting view. This helps save time and keeps your model in sync with your drawings.

Once the model is complete, you can communicate your profile style, perforation patterns, attachments and your basic project requirements to an “ASC Steel Deck” expert for more accurate pricing, and budgeting for bid purposes. Please contact “ASC Steel Deck” technical sales representative for more information.

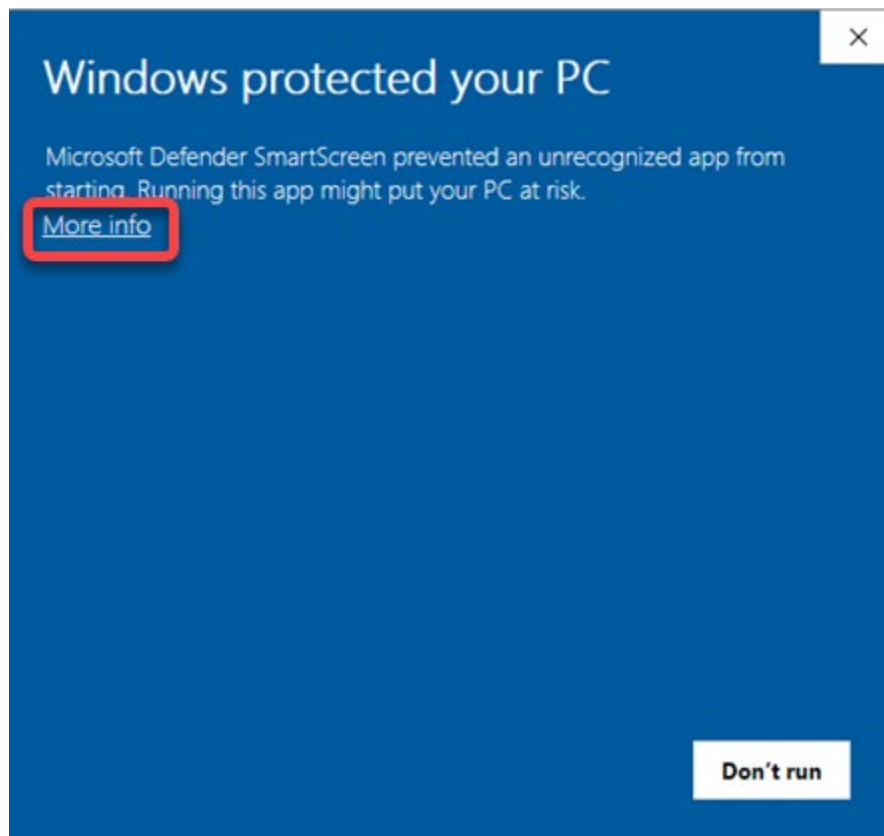
# Installation

**Note: Before running the installer, be sure Revit is closed and disable any security software that may prevent you from installing programs on your computer. You may need to contact your local IT person.**

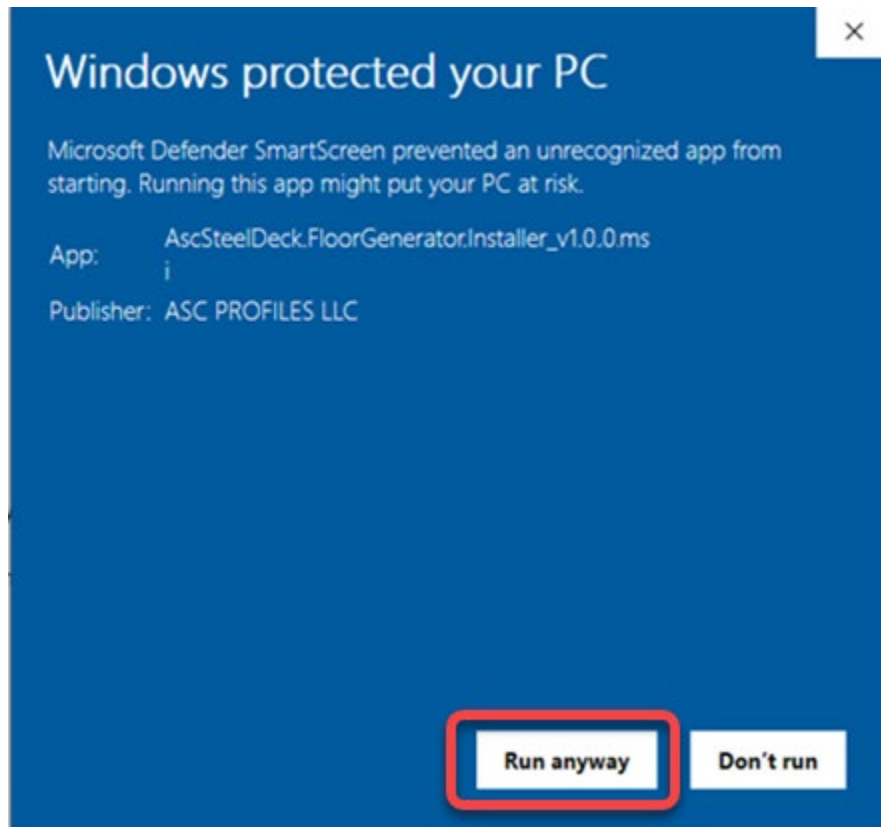
1. After downloading the ASC Steel Deck Add-In for Revit, double-click the installer (**AscSteelDeck.FloorGenerator.Installer\_v1.0.0.msi**) to start the installation process. The installer will deploy the add-in for Revit 2020-2023.



2. If you are blocked by Windows Defender, select "**More Info**";



3. The App name and Publisher will be shown, select **“Run Anyway”**;

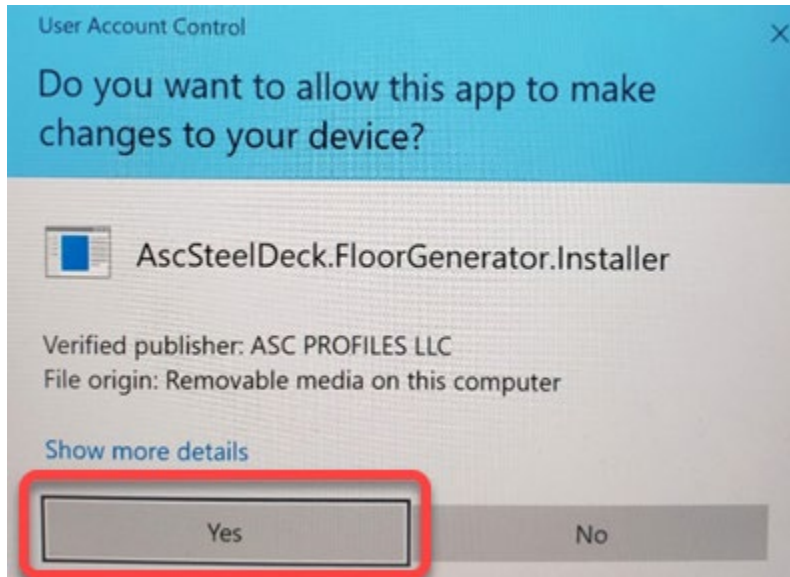


4. Review the license agreement and select **“I accept the terms in the License Agreement”** and **“Install”**;

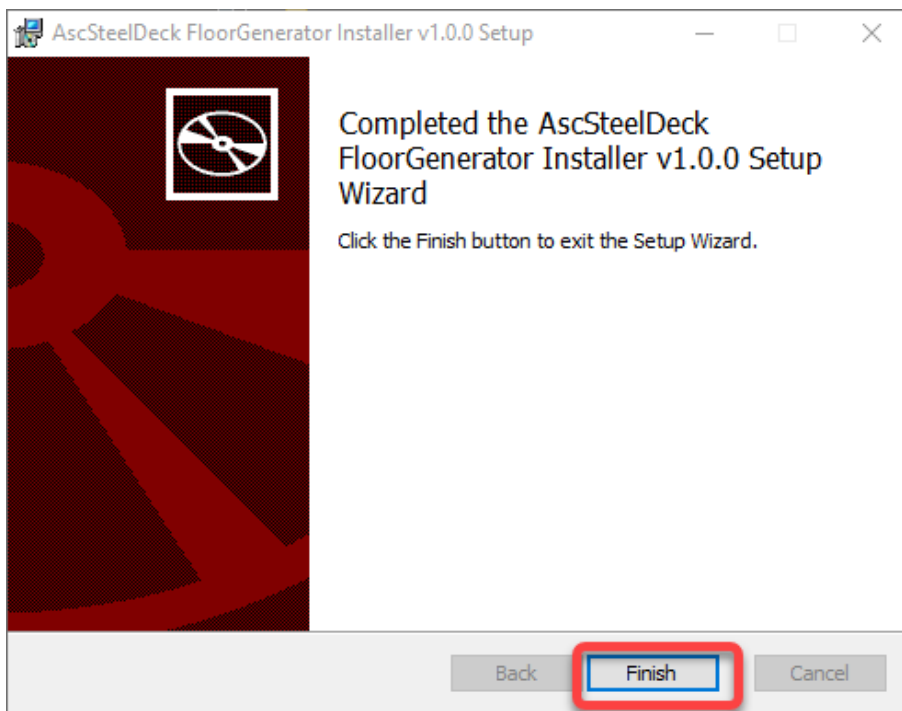


5. Your operating system may display a User Account Control (UAC) dialog asking for permission to run the application, Click **“Yes”**;

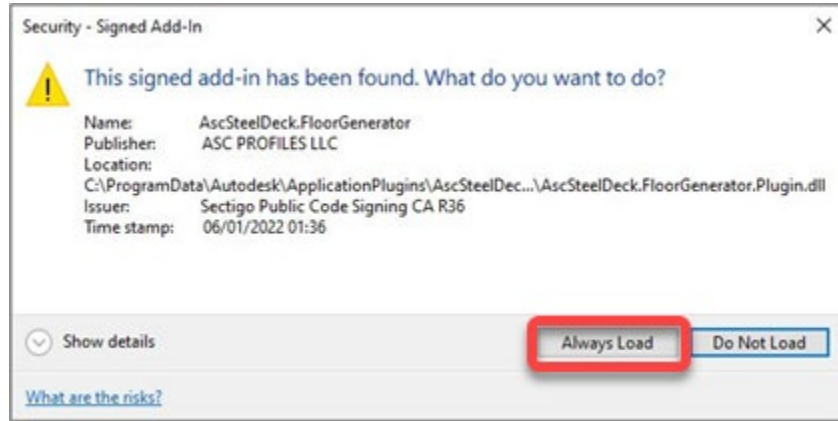
**Note:** In some cases the UAC dialog may not appear even though it is waiting for your input. In this case, look for the UAC shield in the taskbar.



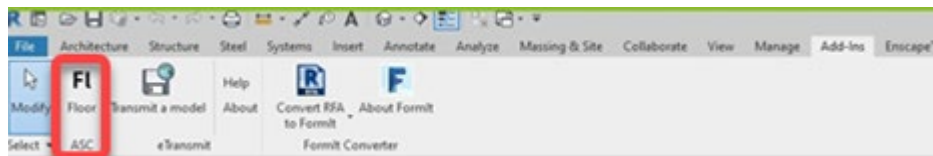
6. The add-in will then be installed. Click **“Finish”** to complete the installation process;



- When you run Revit for the first-time following installation of the add-in, a security warning notification will appear. Select the option to **"Always Load"** so that that add-in will load automatically in the future without prompts;



- With the add-in installed and loaded, you can access the ASC Steel Deck content by clicking on the **"Add-ins"** tab and select the menu option **"FI Floor - ASC"**;

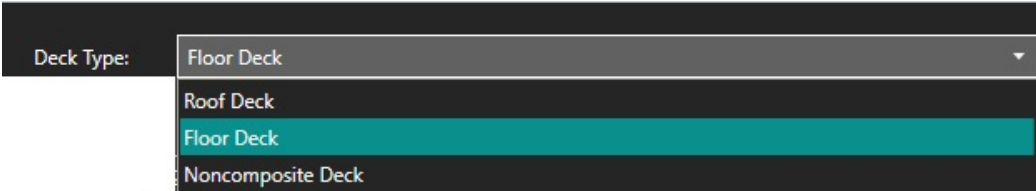


# Usage

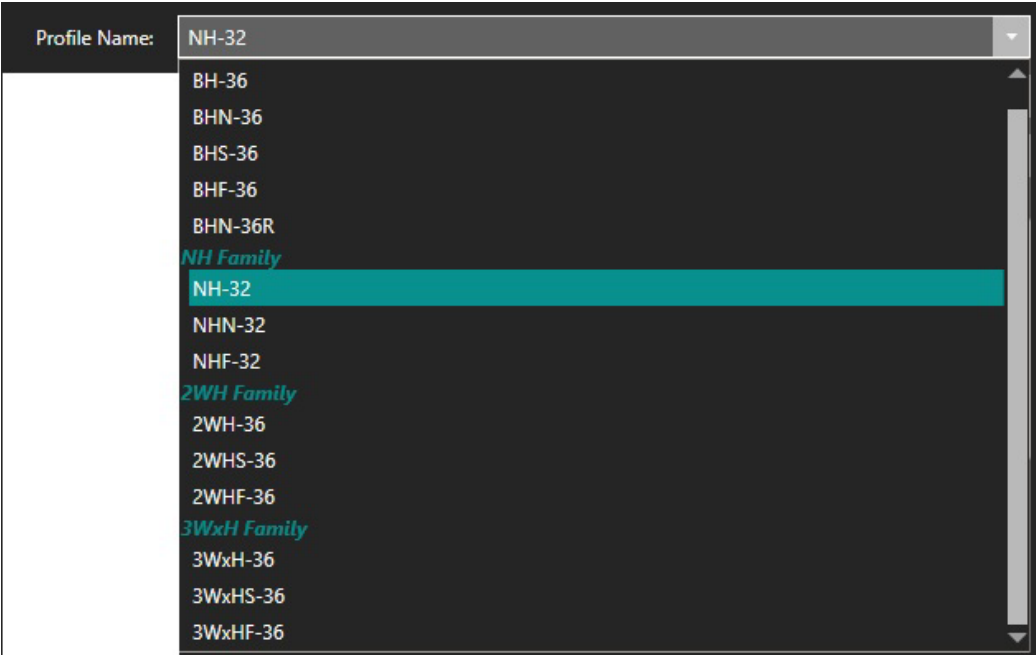
The ASC Floor and Roof Deck Specification add-in allows you to add ASC deck profiles to standard Revit floor and roof assemblies. These profiles will show where section cuts are made through the model. In addition to the profile, deck gauge and finish can be specified.

**NOTE: Both Roof and Floor should be specified with the Structural Floor tool.**

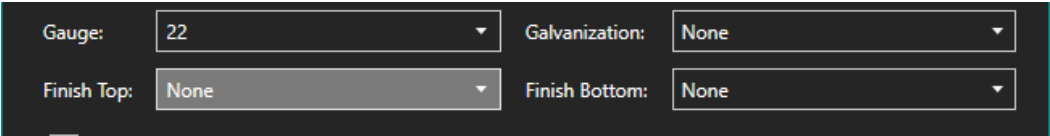
- 1. To specify deck, you must select what Deck Type you want to use which can either be Roof Deck, Floor Deck or Noncomposite Deck;



- 2. Next, you select the Profile Name that is required;



- 3. Then the Gauge, Galvanization and Finish can be specified. Selection options are available in accordance with manufactured products. If something else is needed, please contact an “ASC Steel Deck” Sales specialist.

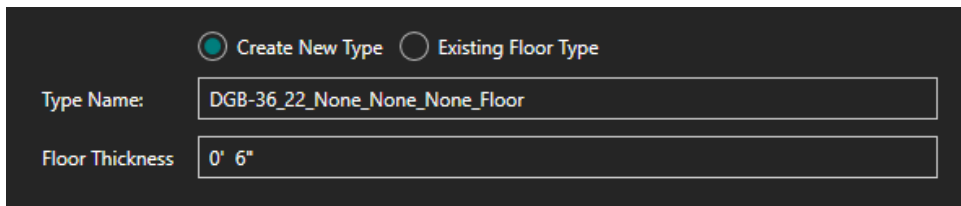




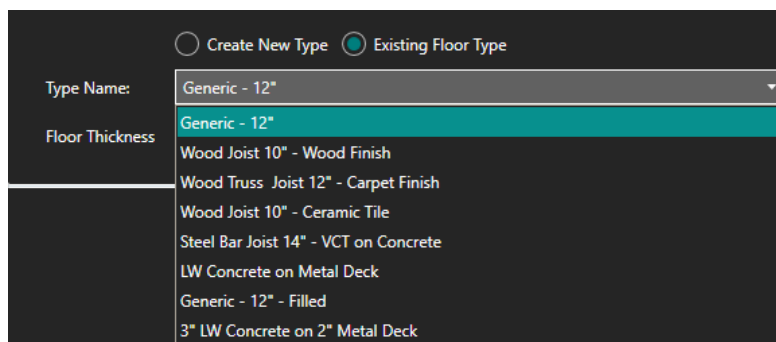
4. At any time of your project, you can both create a new floor/roof type or you can apply deck specification to your existing types;
- If the **Apply to floor type** checkbox is un-checked, the deck profile will simply be loaded into the model and can be selected in the Revit Floor Creation tool like any other profile. However, if the checkbox is left checked (default), you will be able to Create a New Floor Type or Apply the Profile to an Existing Floor Type.



- If you **Create New Type**, a suggested Type Name will auto-populate or you can input your own Type Name. You will also need to input a Floor Thickness at this time.

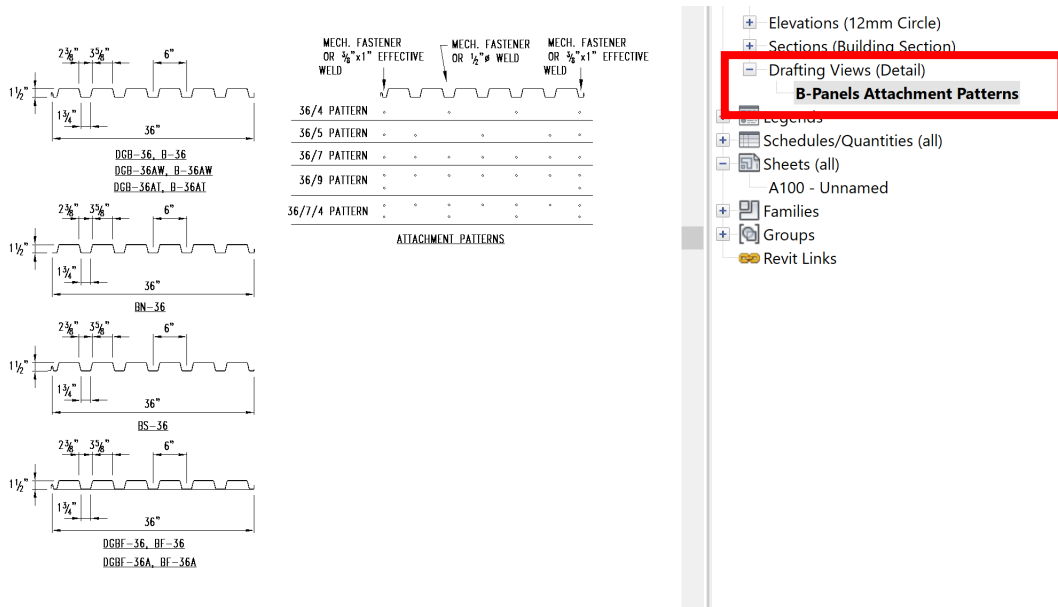


- If you wish to apply the profile to an existing floor type, you will need to select an existing floor type from the drop-down list.



- When you are satisfied with your selections, click the checkmark (OK) to either create the new floor type or apply the profile to an existing floor type. The floor type will then be able to be selected like any other floor type in Revit.

By selecting any specific deck profiles, besides loading the deck profile to concrete floor, ASC Steel Deck Revit add-in inserts the appropriate attachment options and detail specifications with profile measurements. You can view these additional details under **“Drafting Views”** in your project browser.



## Support

For installation or usage issues, please contact Mahsa Mahdavian at [mahsa.mahdavian@ascsteeldeck.com](mailto:mahsa.mahdavian@ascsteeldeck.com) for additional assistance or visit us at <https://ascsd.com>