

## Section1 - Transition from DeltaGrip® to DeltaGrip®DG4™

The DeltaGrip® DG4™ Tool (Patent Number: 11,872,644) builds upon the success of the original DeltaGrip® System by introducing added benefits of higher connection strength, faster cycle time, and increased punch durability.

This powerful, lightweight pneumatic tool fastens the side-laps of interlocking steel roof deck with a highly effective quadruple punch through three layers of steel roof deck. The interlocking system created by The DeltaGrip DG4 Tool creates a permanent, durable connection significantly stronger than a screwed side-lap and comparable to a welded side-lap connection. This connection resists longitudinal movement and vertical separation when subjected to wind, seismic, or construction loads.

The DeltaGrip DG4 Tool installs faster than side-lap screws, reducing labor costs; eliminating the cost of the side-lap fasteners. The ease of the tool's pneumatic action requires less energy than a manual button punch and less labor than a welded top seam connection. This combination of a high-strength quadruple punch and faster cycle time makes the DeltaGrip DG4 Tool a superior side-lap connection solution.

1. *When is DG4 entering the market?*  
June 24, 2024
2. *What profiles are impacted?*  
The new DG4 tool can be used on all of our profiles with DG side-lap including DGB, DGN, DG2WH, and DG3WxH in both roof and floor profiles.  
Note that with the new DG4 tool, our B deck profile had to be updated so the jaws of DG4 tool would fit better. Please refer to the second section of this letter for more information on the new B deck profile.
3. *Will Diaphragm tables with DG4 change?*  
Yes. The IAMPO ER0161 report has been updated to reflect the DG4 connection values and all diaphragm tables have been updated accordingly.
4. *Will the online submittal tool reflect the new DG4 values? And when?*  
Yes. The submittal tool was updated on June 24,2024.
5. *Can I use the DeltaGrip®DG4™ with the original B Deck profile and vice versa?*  
Please refer to Section 2 of this letter, Question 7.

6. *Will submitted jobs with DG3 be converted to DG4?*  
Projects previously submitted with DG3 will be produced using the DG3 profile unless specifically instructed by customer to convert. Projects must be resubmitted to convert to DG4.
7. *Will DG3 values and diaphragm tables still be available?*  
Yes. ASC will keep original section properties in archive for reference. Please contact your Sales Representative if needed.

Section 2 - New B Deck

1. *When is the New B deck entering the market?*  
June 24, 2024
2. *Can I still specify and buy the original B deck?*  
Projects submitted after June 24,2024 will be required to use the new B Deck values.
3. *What profiles are impacted?*  
All B Deck variations are impacted. The new dimensions have changed by a slight amount and can be seen in images below. These slight changes do impact the section properties and the new values can be found in IAPMO ER0161 for roof profiles and IAPMO ER0329 for floor profiles.
4. *What is changing on the new B Deck?*
  - a. *Profile Dimensions - The rib spacing, and total panel coverage will remain the same. There are slight variations to the flute dimensions. It is important to note that the updated profile will not nest with the original profile. See below for visual representation.*

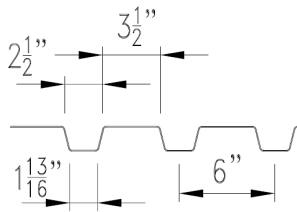


Figure 1. New B-Deck profile

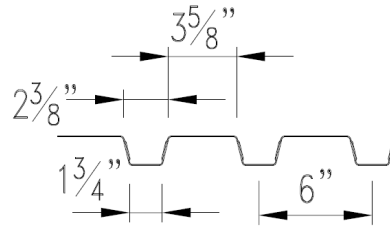


Figure 2. Old B-Deck profile

- b. *Embossments - The new B Deck embossments will change direction from going in towards the concrete to going out away from the concrete along with slight dimensional changes. See below for a visual representation.*

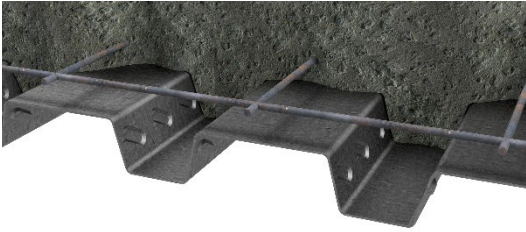


Figure 3. New B Deck Embossments

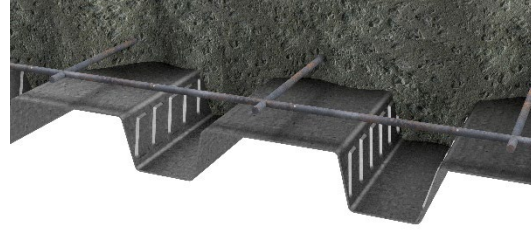


Figure 4. Old B Deck Embossments

5. *Will section properties change?*

Yes. For the new B Deck, there will be some slight changes to section properties in the IAPMO reports.

If you have previously submitted a project using IAPMO properties prior to June 24, 2024, and intend to use the new DeltaGrip®DG4™ and/or the new B deck profile, ASC recommends reviewing the new property values for changes. You should also resubmit the new data and notify ASC so we can update the backlog to the correct profile.
6. *Will the online submittal tool reflect the new section properties?*

Yes. The new values will be reflected on June 24, 2024.
7. *Can I use the DeltaGrip®DG4™ with the original B Deck profile and vice versa?*

The new DeltaGrip®DG4™ tool will not easily fit on the old B Deck profile but the existing DeltaGrip®DG3™ will fit on the new B deck profile, however, the IAPMO approved section properties are only available for DeltaGrip®DG4™ with the new B deck profile and DeltaGrip®DG3™ with the original profile. If you need further clarification, please contact your sales representative.
8. *If I have submitted a job with the original B deck properties prior to June 24, 2024, but the job will not require material until after June 24, 2024, will I still be able to obtain the original profile and how long will it be available?*

Yes. The original profile will be available to run through existing backlogs. If you have questions about converting your orders or timing of a full changeover, please contact your sales representative.
9. *Will IAPMO section properties be available after June 24, 2024?*

Yes. ASC will keep original B Deck section properties in archive for reference. If you need to access, please contact your sales representative.